

DANE COUNTY
REGIONAL AIRPORT
MADISON



Noise Abatement Subcommittee

October 25, 2017

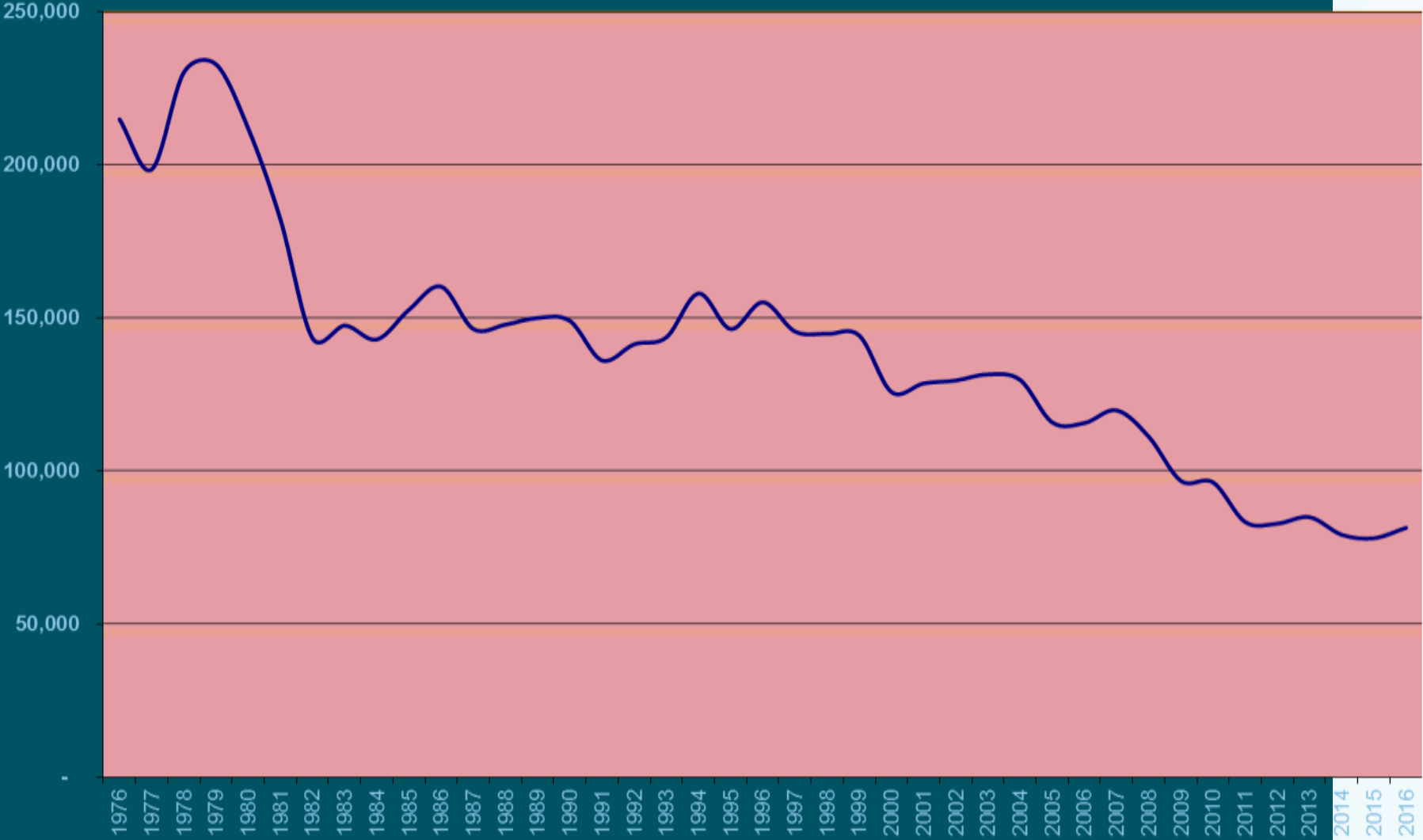
It's all about the journey.

AIRCRAFT MOVEMENTS

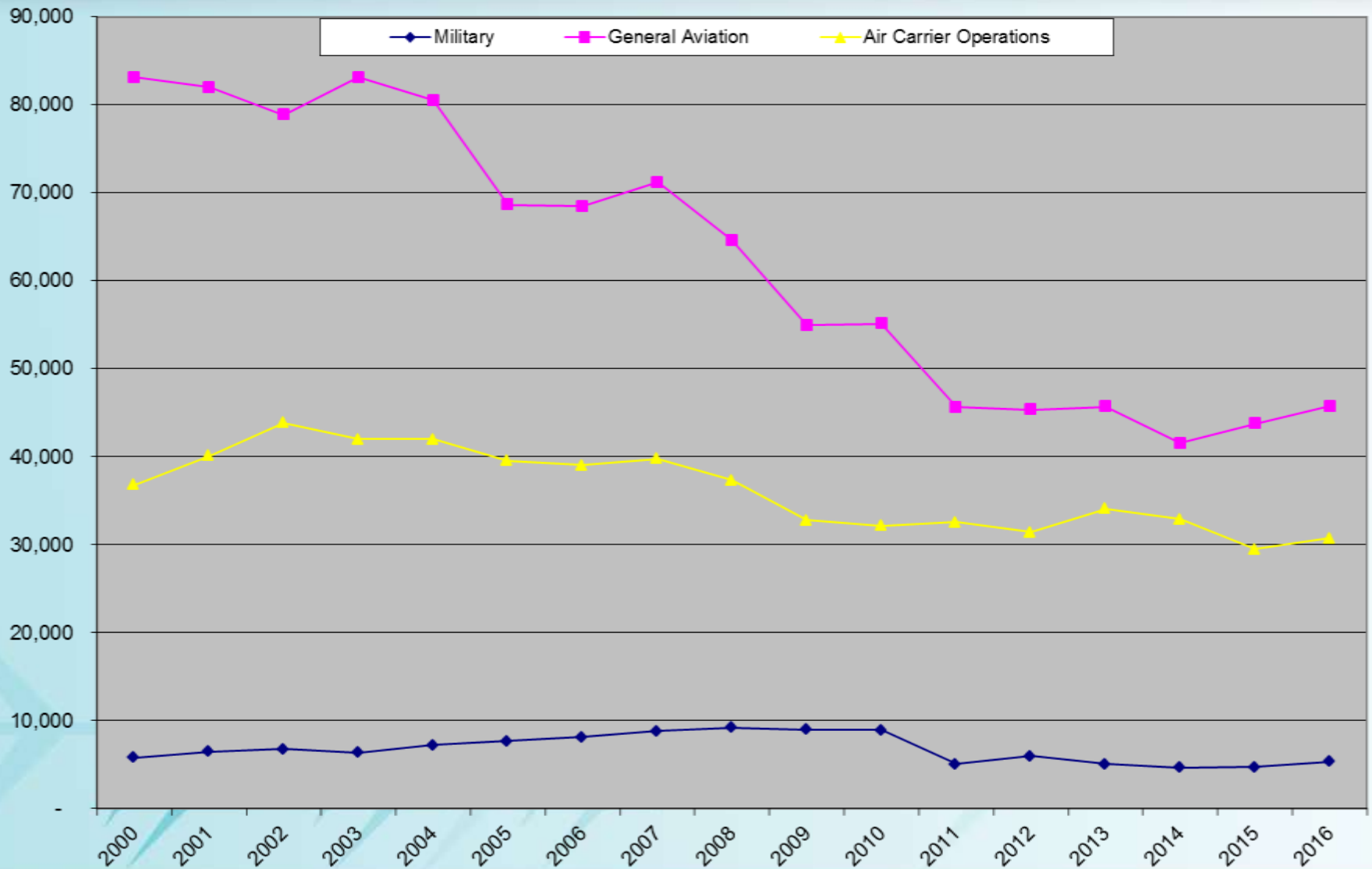
APR 17 – SEP 17

Aircraft Movements	APR 16 – SEP 16	APR 17 – SEP 17	% Change
<i>Air Carrier</i>	15,440	15,540	0.0
<i>Military</i>	2,829	1,979	-30
<i>General Aviation</i>	24,143	28,584	18
<i>Total Movements</i>	42,412	46,103	8.0

ANNUAL AIRCRAFT OPERATIONS

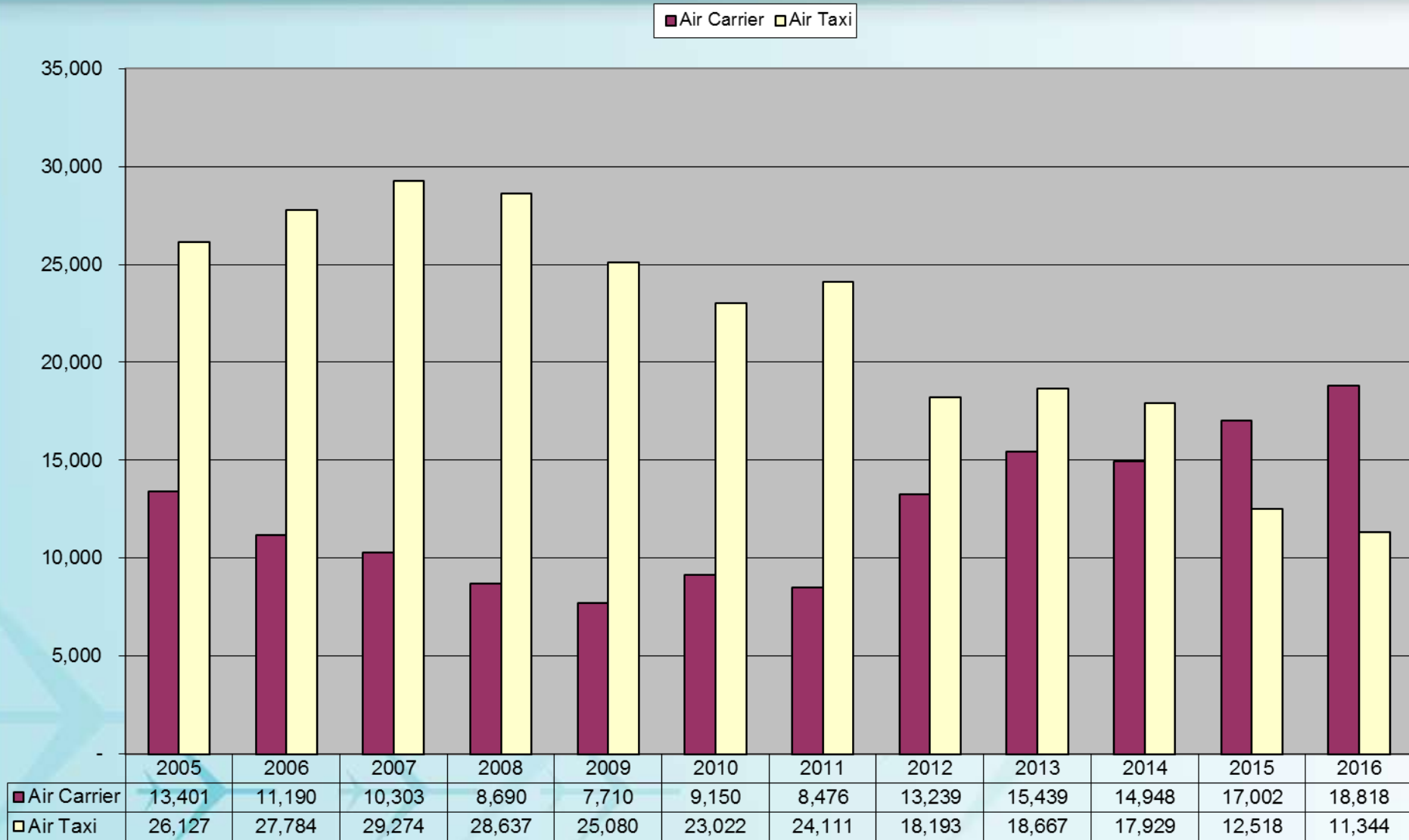


HISTORICAL OPERATIONS BY TYPE



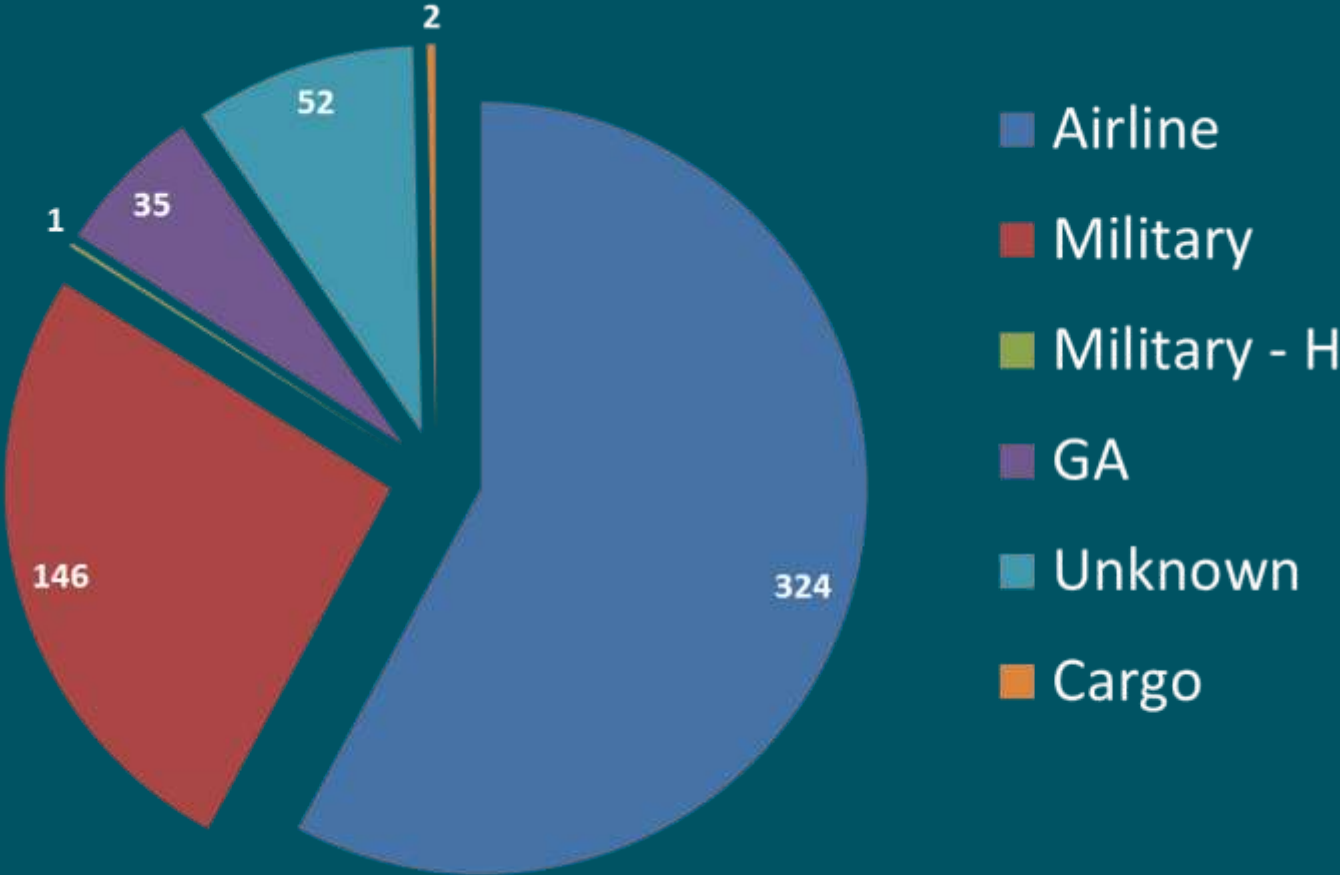
10/29/2014

Air Carrier (A-320, B717) vs Air Taxi (CRJ, ERJ)



COMPLAINTS BY AIRCRAFT TYPE

APR 17 – SEP 17

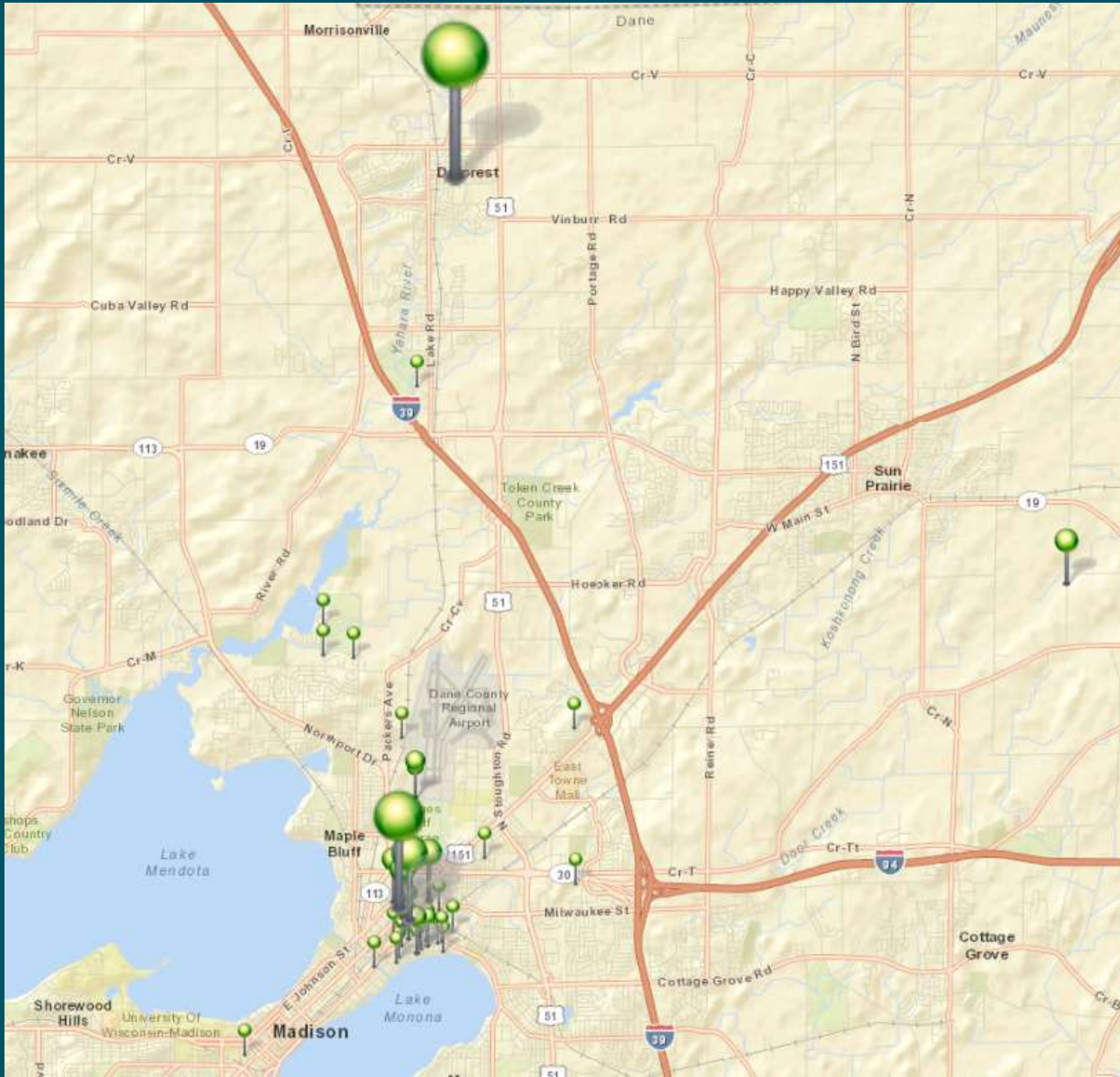


COMPLAINTS BY AREA

Area	APR 17 - SEP 17		APR 16 - SEP 16	
	Complaints	Households	Complaints	Households
<i>Blooming Grove</i>	0	0	0	0
<i>Burke</i>	0	0	0	0
<i>Deerfield</i>	0	0	0	0
<i>DeForest</i>	268	1	213	1
<i>Fitchburg</i>	0	0	0	0
<i>Madison</i>	253	42	124	36
<i>Marshall</i>	37	1	0	0
<i>Middleton</i>	0	0	0	0
<i>Monona</i>	0	0	6	2
<i>Stoughton</i>	0	0	0	0
<i>Windsor</i>	0	0	0	0
<i>Verona</i>	0	0	0	0
<i>Waunakee</i>	2	1	0	0
Total	560	45	343	40

COMPLAINT LOCATIONS

APR 17 – SEP 17



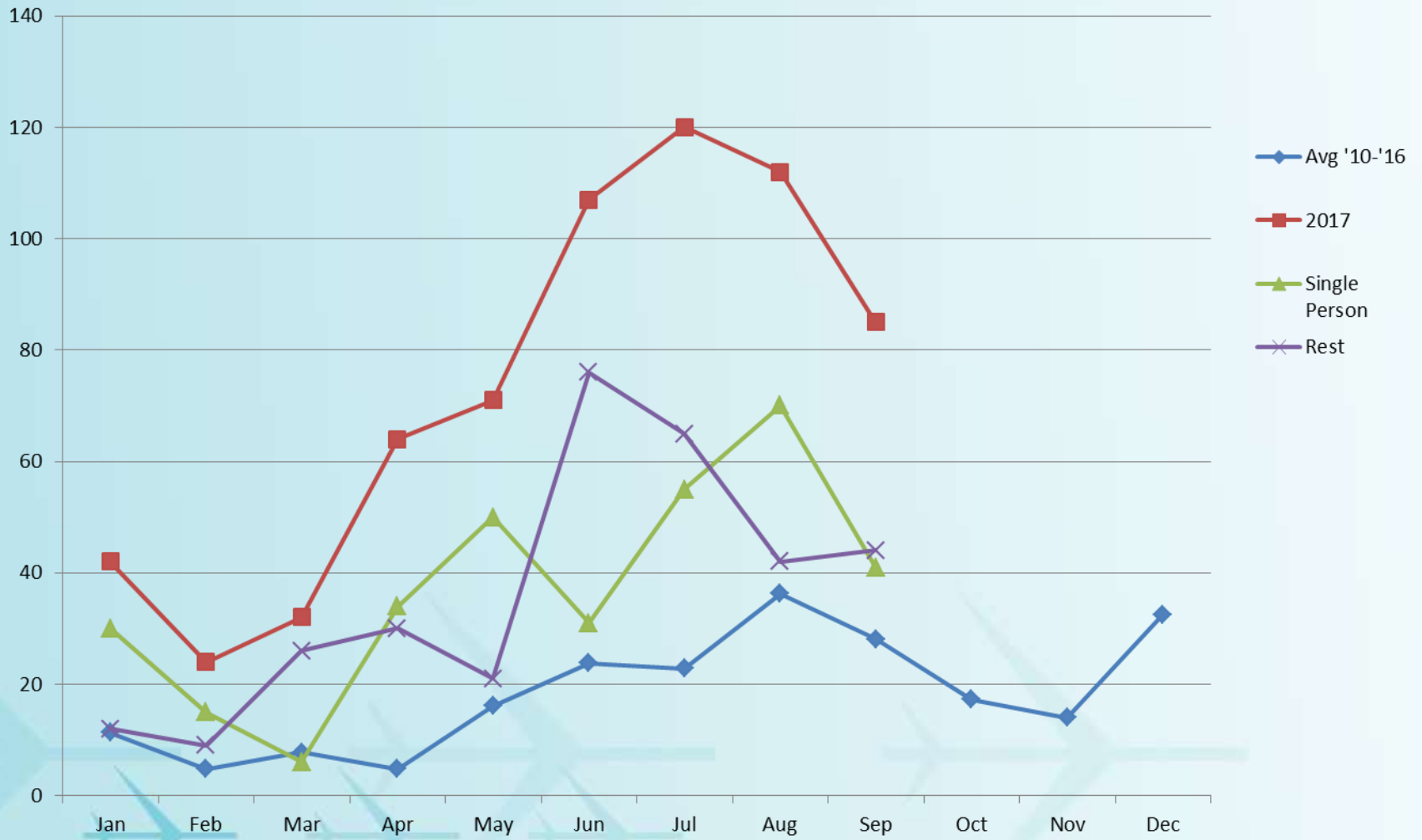
NOISE COMPLAINT CALLS

APR 17 – OCT 17

	APR	MAY	JUN	JUL	AUG	SEP	TOTAL
DAY	15	23	62	54	51	37	242
NIGHT	40	48	45	66	61	48	308
TOTAL	65	71	107	120	112	85	560

Noise Complaint History





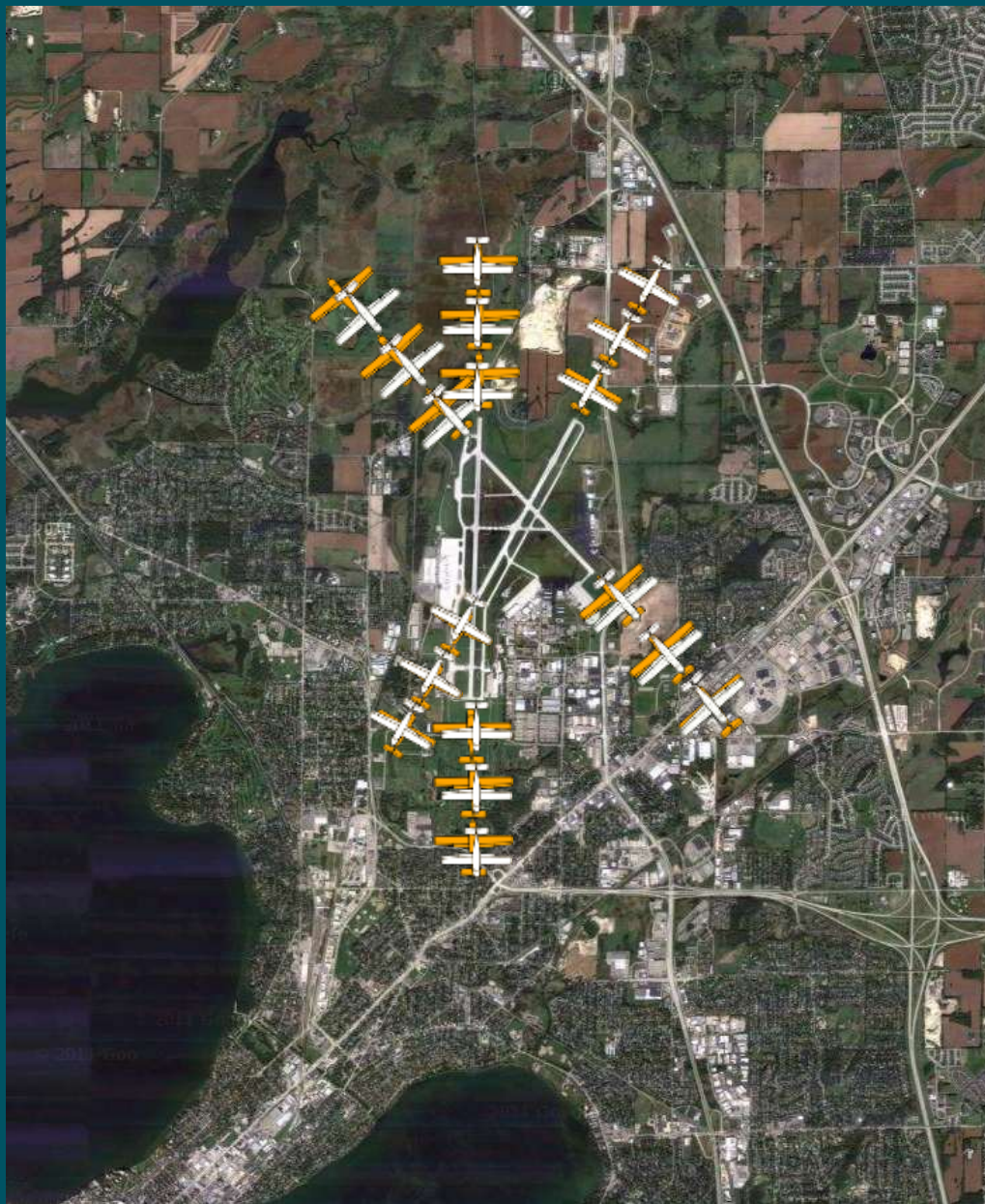
COMPLAINT HISTORY

APR 17 – OCT 17

	1	2	3	4	5	6	7	8	9	10	11	12	13	14	15	16	17	18	19	20	21	22	23	24	25	26	27	28	29	30	31
A P R	M M	A M		M M		UU UU MM MM			M M M	U		G G	M M				G		U				M M		U	G		U A	A A		
M A Y					M			M M A A	A	AAM			A		M	G M M U	MU UU	G M A M					M A		A	M U M	A M		A	M	U
J U N	U	U U	A M M M	M M U	U G MM MM MM MM MM	U MM MM MM	M		A M M			M M M U	M						MM M	U	UA AAA MM MM MM MM M	M M A M M M			A A	M		U G A M M	C A M M M		
J U L	U G A		U G	U	MM	MM M	MM MM MM MM		A	MMM MMM MMM A	A A A A	M			A		AM M M M M M	A M M M M	MM					MM M	G A A M M	M M U				A	
A U G	U G	U G G G	U M M M	U M		GU	GU	G G G	U U G G G	G			G G	A	U	G M M H A A								M		U			U U	U M	
S E P					A	UA	UU U	G	A			G	G A	A		U	UU	G G U	AU UU MM MM					C	AU MM MM MM MM	A	A		A A A	A	

A = Airline; G = General Aviation; H = Military Helicopter; M = Military Fixed Wing; U = Unknown

WIND CONDITIONS SUMMARY



• WINDS FROM
THAT ARE KNOTS
THE SOUTH

• VISIBILITY
GREATER THAN 3
MILES

• RUNWAY
CONDITION IS DRY

• PILOT COMPLIES
WITH VOLUNTARY
CONTRA FLOW
OPERATION

Wisconsin Wind Data*

*National Weather Service

Month	Prevailing Wind	Greater than 5 kts
Jan	WNW – 11.5	94.0%
Feb	WNW – 12	93.4%
Mar	NW – 13	93.9%
Apr	S – 11.4	93.6%
May	S – 10.4	93.0%
Jun	S – 9.7	91.6%
Jul	S – 9.2	90.1%
Aug	S – 9.1	88.9%
Sep	S – 9.8	90.1%
Oct	S – 10.4	92.2%
Nov	S – 10.7	94.3%
Dec	WNW – 12.4	94.0%
Annual	S – 12.4	92.4%

NOISE ABATEMENT COMPLIANCE AUDIT

WEATHER / RUNWAY DATA	
WINDS AT 5 KNOTS OR HIGHER ¹	77.25%
VISIBILITY AT 5 STATUTE MILES OR LESS	3.68%
RUNWAYS CLOSED ²	18/36 = 411.26 3/21 = 205:28 14/32 = 66:29
¹ – Based on METAR weather observations at the time of recorded aircraft operations. ² – Runway closures primarily due to runway maintenance	

NOISE ABATEMENT COMPLIANCE AUDIT

RUNWAY USE

Aircraft observed departing to the North	43.12%
Aircraft observed arriving from the North	57.76%
Aircraft observed departing to the South	60.21%
Aircraft observed arriving from the South	43.99%

PASSUR FLIGHT TRACKING

14,878 operations recorded by Passur flight monitoring system

1,084 Passur observations of departures to the north and arrivals from the north when conditions allow for implementation of Noise Abatement Procedures

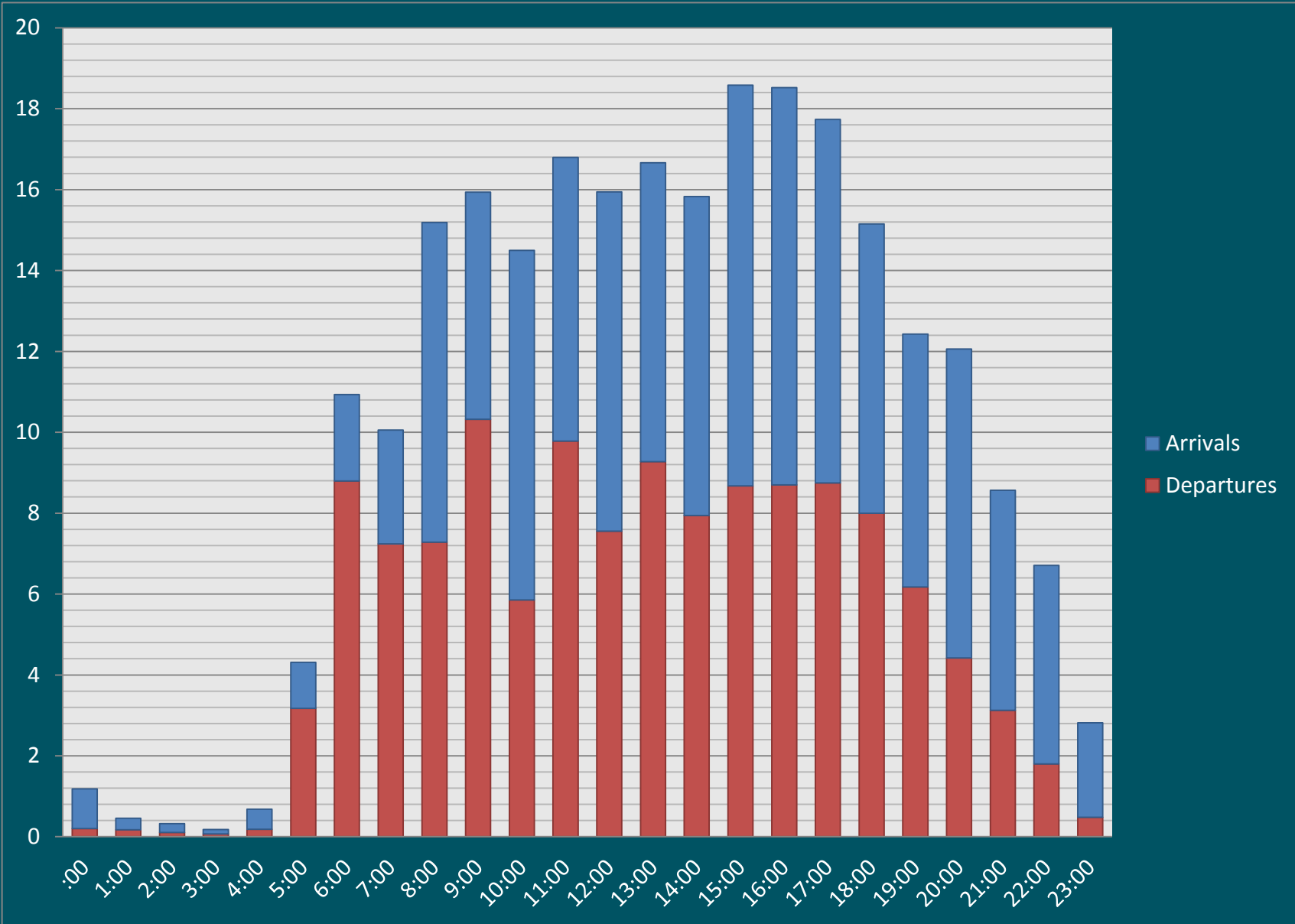
NOISE ABATEMENT COMPLIANCE AUDIT

**** With 100% compliance of Noise Abatement Procedures, there are times aircraft are required depart to the south and arrive from the south. ****

RUNWAY USE FACTORS			
	Wind	Visibility	Ceiling
South Departure	66.94%	5.20%	0.05%
South Arrival	68.37%	4.11%	12.58%

**** Safety, traffic, airline requirements, and weather are all components which are factored into a pilot's decision when landing and taking off. ****

AVERAGE HOURLY OPERATIONS

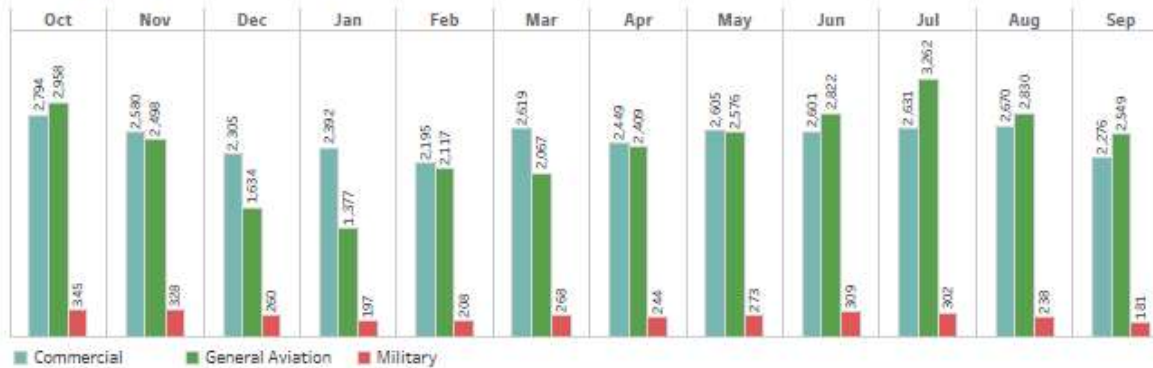


MSN ATCT TRAFFIC INFORMATION

MSN Airport Operations By Runway, September 2017



MSN Operations over Last 12 Months



NOISE ABATEMENT SUBCOMMITTEE

Recent Initiatives

- New “Arrival/Departure” dropdown on the Airport’s Noise Report Form
- Communicate with ANG, Army Guard and FAA to reduce and prevent transient military flight training operations
- Provide a proactive forum (front page of the Airport’s website) to report airfield construction which may result in a temporary shift of flight paths for aircraft arrivals and departures

CONTACT INFORMATION

24 Hour Aircraft Noise Line: **246-5841**

Online Form: <http://www.msnaairport.com/community/noise.aspx>

Madison Automated Weather: **249-0615**

DANE COUNTY
REGIONAL AIRPORT
MADISON



Questions?

It's all about the journey.